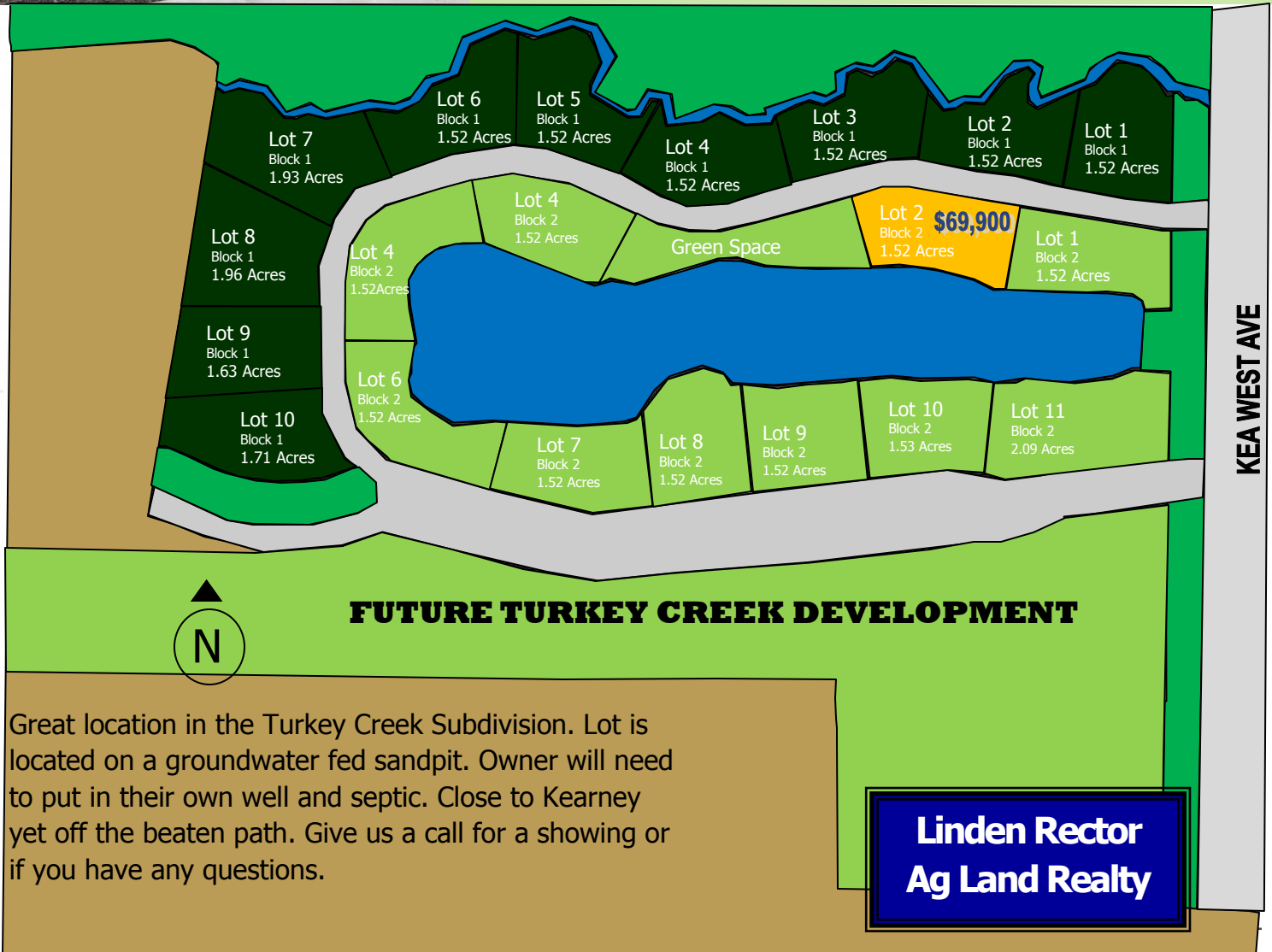


# Elegance meets environment at Turkey Creek



Kearney's first gated, private community, Turkey Creek blends the sights and sounds of the country with the convenience of city living. Set near a timberline and tranquil creek, with access to private lakes, this community offers a lifestyle like nowhere else in Kearney. Nature and recreation abound — right in your own backyard.

Adding to its exclusive location, at Turkey Creek your home is built your way. Choose from a variety of land and location options. Each lot offers room to breathe and is anything but cookie-cutter. Here your home can truly reflect your lifestyle. *Enjoy a luxurious retreat just off the beaten path.*



Great location in the Turkey Creek Subdivision. Lot is located on a groundwater fed sandpit. Owner will need to put in their own well and septic. Close to Kearney yet off the beaten path. Give us a call for a showing or if you have any questions.

**Sara Rector**  
308-293-0220  
[www.srector.com](http://www.srector.com)  
[srector@srector.com](mailto:srector@srector.com)



**Steve Linden**  
308-627-6869  
[www.slinden.com](http://www.slinden.com)  
[slinden@slinden.com](mailto:slinden@slinden.com)